



Luminite Electronics Ltd.

2a Bellevue Road, London, N11 3ER

info@luminite.co.uk

020 8368 7887

LGIPBRIDGE

Genesis TCP/IP Bridge

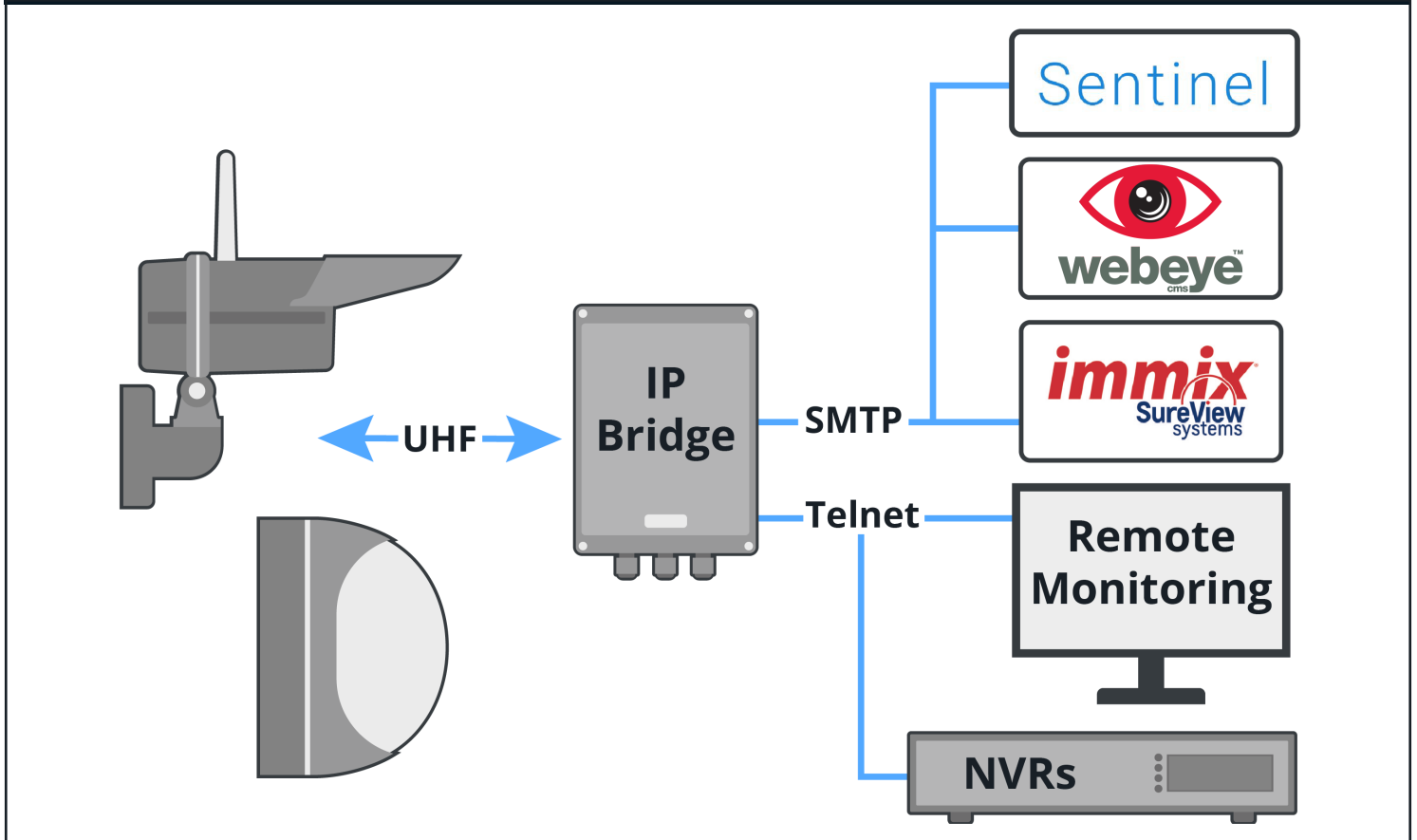
The Genesis TCP/IP Bridge connects products that use the UHF network, such as Genesis PIR detectors, to the internet using the widely utilised Telnet protocol, allowing the system to be remotely monitored. The bridge can connect to third-party platforms via the SMTP protocol and is compatible with Immix, Sentinel, and Webeye ARC monitoring platforms.

The IP bridge is powered either by 5 volts DC (PSU part code = 5V.PS) or via Power over Ethernet (PoE). The bridge can be configured quickly over Bluetooth using a mobile smartphone, allowing users to obtain the IP address, set up the site and subnet, manage integrations, and connect the bridge to the local Wi-Fi network.

The IP bridge has a wireless range of up to 1km line of sight, which can be extended using an AE434 aerial to assist when dealing with difficult sites. Up to 64 PIR detectors can be programmed to transmit events to one IP bridge, and software updates can be administered remotely. The IP bridge is IP66 weather rated and is suitable for outdoor use.



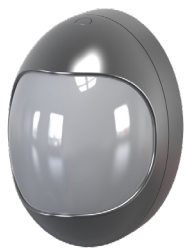
Genesis IP Bridge Integrations



For Use with the LGIPBRIDGE



Genesis 1



Genesis 2



LGKF4



LGTX434



LGWT434



LGRU16



LGKSQ



AE434



LGSOUNDER

Technical Specifications

RF Input	434.525Mhz 10m/a
Antenna	1/4 wave included - BNC connection
RF Range	1km line of sight
Data Out	Ethernet
Configuration	via Bluetooth
Encoding	Manchester with rolling code
Updates	Software updates via USB
TCP/IP	Via Ethernet/Wi-Fi
Settings	Band rate 19200 - 8 data bits - 1 stop bit - no parity
Operating Voltage	5 volts DC PSU part code = 5V.PS
Current Consumption	250m/a
Enclosure	ABS Plastic Housing
Weatherproof Rating	IP66
Temperature Range	-10°C to +60°C

Dimensions

